

EPIC® H-A 4

H-A inserts with screw termination up to 2.5 mm² wire cross section
 The small H-A 3 / H-A 4 are used whenever there is minimal space.
 Easy to service screw connection
 Easy cable connection with strait cable entry in the contacts



Industrial machinery and plant engineering



Assembly time



Space requirement

Info

Insert for three-phase current application with neutral conductor
 easy to assemble due to straight entry of conductors

Application range

Apparatus construction
 Machine and equipment manufacturing
 Control engineering

Technical Data

Stripping length (mm):	6
Rated voltage (V):	IEC: 400 V UL: 600 V CSA: 600 V
Rated impulse voltage:	4 kV
Rated current (A):	IEC: 23 A UL: 10 A CSA: 10 A
Contact resistance:	1.5 - 4 mohm
Contacts:	Copper alloy, hard silver-plated
Number of contacts:	4 + PE
Termination methods:	Screw termination: 0.5 - 2.5 mm ² (2.5 mm ² with conductor end sleeves depending on the crimping profile)
Cycle of mechanical operation:	100
Temperature range:	-40°C to +100°C, short-term up to +125°C
VDE-tested:	Certified production control: VDE-REG. no.: B437 UL-tested: UL File Number: E75770
Degree of soiling:	3



Note

Photographs are not to scale and do not represent detailed images of the respective products.



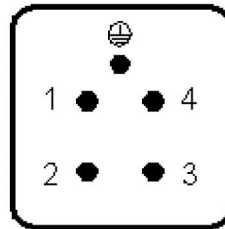
EPIC® H-A 4

Part number	Article description	Contact type	Number of operating contacts	Pieces / PU
H-A 4 screw termination				
10431000	H-A 4 SS	male	1 - 4	10
10432000	H-A 4 BS	female	1 - 4	10

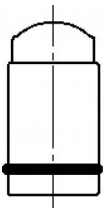
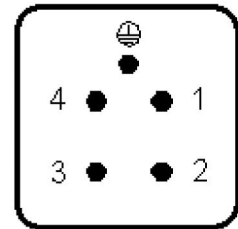
EPIC® H-A 4



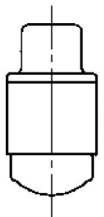
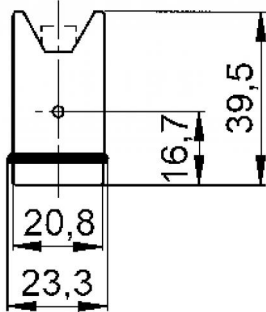
M



F



F



M

